

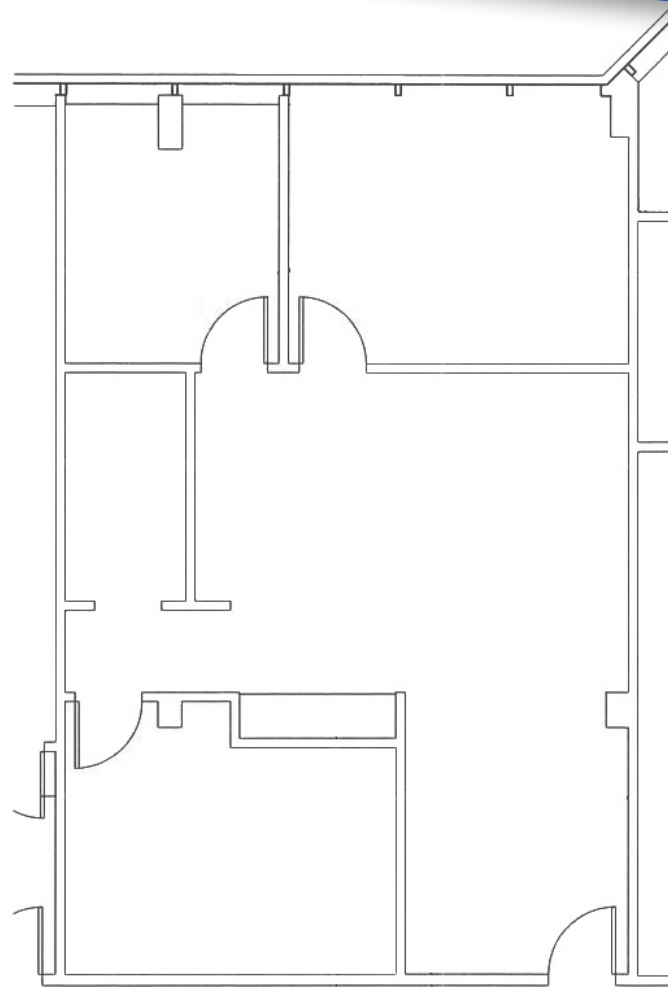
## BUILDING 100

### Suite 170

1,176 r.s.f.

- Power - Duke Energy
- Janitorial Services - Building Maintenance Services
- Water - Orange County Utilities
- Natural Gas - TECO (100, 200 & 300)
- IT providers - AT&T, Brighthouse & TW Telecom

EAST ORLANDO'S  
**premier office park**



MICAH STRADER  
+1 407 982 8688  
[micah.strader@am.jll.com](mailto:micah.strader@am.jll.com)

